

Please make the following alterations to the User's Manual IM707001-01E (see underlined text).

Page 1 Correction of "Notes" (underlined section)

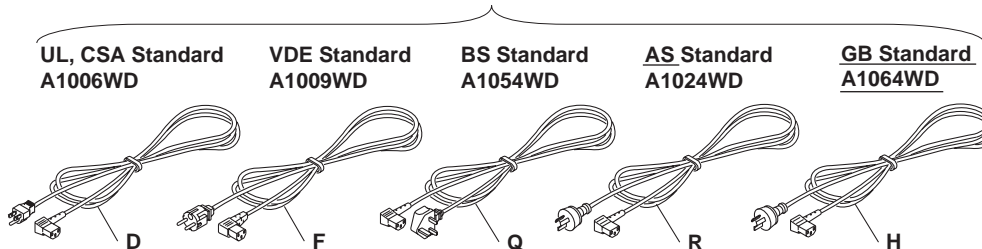
The contents of this manual describe WE7000 Control Software Ver. 4.6.0.0.

Page 2 "Measuring Stations WE400/WE800"

Model	Suffix Code	Description
.....
<u>Power cord</u>
	-R.....	<u>AS</u> standard power cord (Part No.: A1024WD)
	-H.....	<u>GB</u> standard power cord (Part No.: A1064WD) (complies with the CCC)

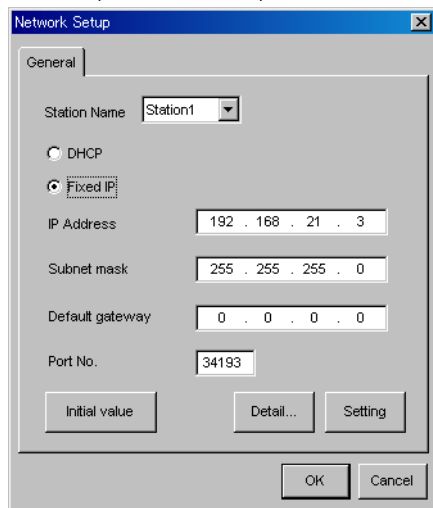
Page 3 "Standard Accessories"

One of these power cords is supplied according to the suffix code.



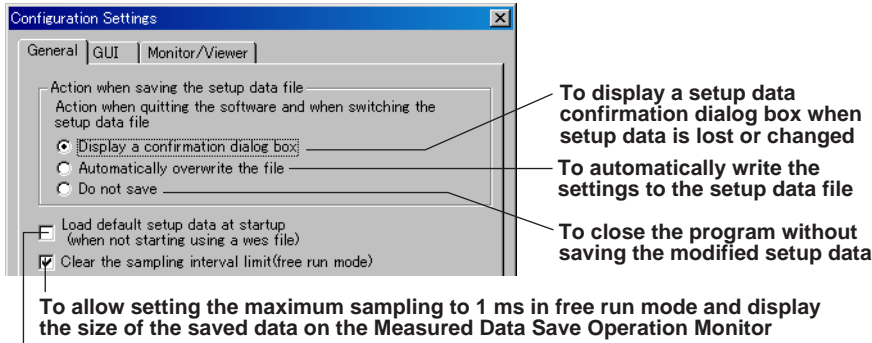
Page 4-9 "Set IP"

The Set IP dialog appears as shown below. For the procedure for setting these parameters, see the User's Manual (IM707052-01E) of the Fast Ethernet module.



Display the name of the target measuring station in the [Station Name] list box. Then set the [IP address], [Subnet mask], [Default gateway], and [Port No.]. If you click the [Initial value] button, all the network parameters are reset to default values. If you change the settings, click the [Setting] button. If a confirmation dialog box opens, click the [Yes] button. This will restart the measuring station. The new settings are applied when the WE7000 restarts.

Page 4-10 “• General” under “Configuration Settings”



Select this check box when starting the program using the previous setup data (when you closed the program the previous time)

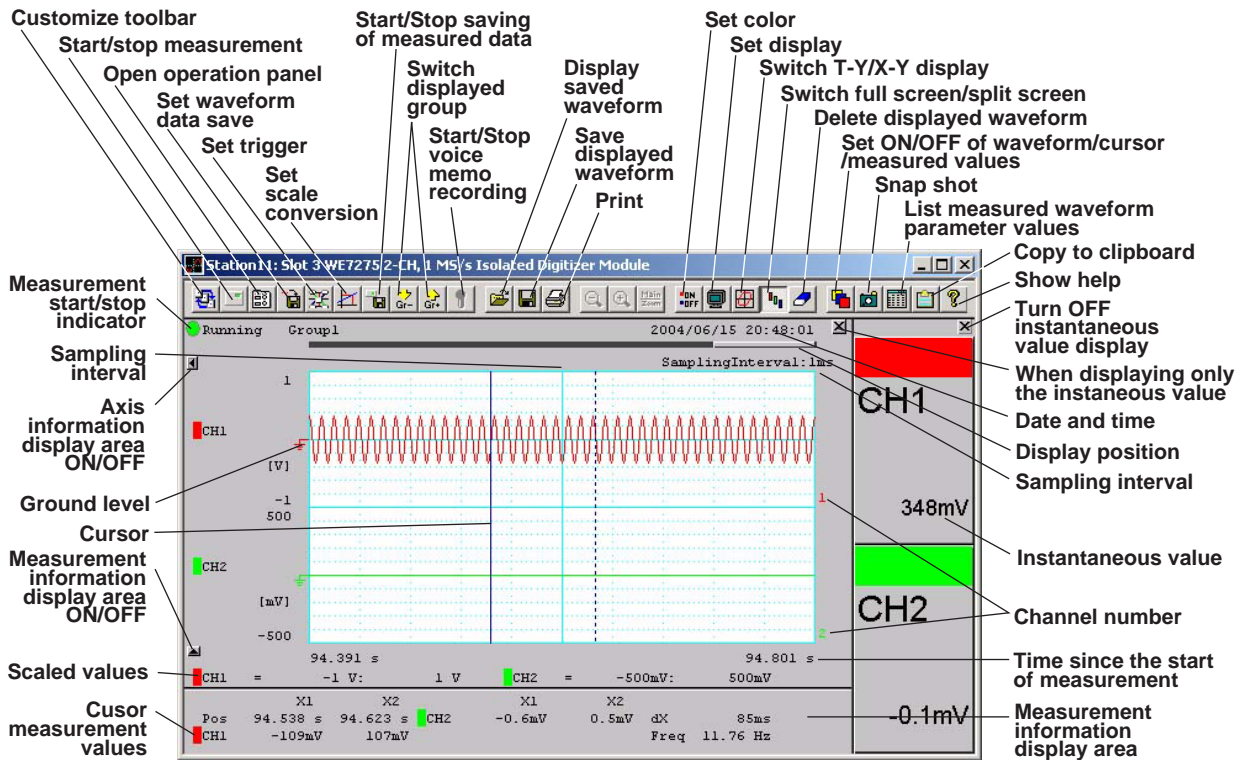
Note

The maximum sampling interval of each measuring station in free run mode is 1 ms on the WE400/WE800.

Page 4-11 “• Monitor/Viewer” under “Configuration Settings”

WE7081, WE7231 (Ver. 3.05 or later), WE7235 (Ver. 3.01 or later), WE7241 (Ver. 3.15 or later), WE7251 (Ver. 3.05 or later), WE7271/WE7272 (Ver. 3.06 or later), WE7273, WE7275 (Ver. 3.05 or later), WE7521 (Ver. 3.02 or later)

Page 4-27 “2-CH, 1 MS/s Isolated Digitizer Module (WE7275) in the free run mode” under “Waveform display example”



Page 4-30 “• Limitations”

- Controlling of the data save operation by specifying a time is valid on all modules.
Trigger control is valid only on the following modules with the indicated software version.
WE7231 (Ver. 3.05 or later), WE7235 (Ver. 3.01 or later), WE7241 (Ver. 3.15 or later), WE7245 (Ver. 3.04 or later), WE7251 (Ver. 3.06 or later), WE7271/WE7272 (Ver. 3.07 or later), WE7273 (Ver. 3.01 or later), WE7275 (Ver. 3.07 or later), and WE7521 (Ver. 3.04 or later)
Save operation using gates is valid only on the following modules with the indicated software version.
- When using alarms for [Start condition] and [Stop condition]
WE7231 (Ver. 3.05 or later) and WE7241 (Ver. 3.15 or later)
- When using triggers for [Start condition] and [Stop condition]
WE7235 (Ver. 3.05 or later), WE7245 (Ver. 3.05 or later), WE7251 (Ver. 3.08 or later), WE7271/WE7272 (Ver. 3.08 or later), WE7273 (Ver. 3.01 or later), and WE7275 (Ver. 3.08 or later)
- Cannot be used on the GP-IB window function.

Page 4-31 “Saving Waveform Data”

Save the specified number of files of data

Save data in a cyclic pattern within the specified number of files

Enter the save destination/file name

The screenshot shows a dialog box titled 'Station1/Slot 1 (WE7251) Save Acquisition Data'. It contains several sections:

- File Name:** A text field containing 'c:\WEDATA\'. A callout points to this field with the text 'Select the destination folder'.
- File name number increments:** A checkbox labeled 'File name number increments each time measurement starts' is unchecked. A callout points to it with the text 'When incrementing the file name number when saving of the measured data is restarted after it is suspended'.
- Reset:** A button labeled 'Reset'. A callout points to it with the text 'Reset the incremented file number'.
- Start condition:** A dropdown menu set to 'None'. A callout points to it with the text 'Select the conditions for starting the saving of the measured data'.
- Stop condition:** A dropdown menu set to 'None'. A callout points to it with the text 'Select the conditions for stopping the saving of the measured data'.
- File save method:** A dropdown menu set to 'One File'. A callout points to it with the text 'Select the file save method during free run mode'.
- Save Method:** Radio buttons for 'Cyclic' (selected) and 'Limit Number of Files'.
- File Type:** Radio buttons for 'Binary' (selected), 'Ascii', and 'Include Time Axis Information'. A callout points to 'Binary' with the text 'Select the file format for the saved data'. Another callout points to 'Include Time Axis Information' with the text 'When time axis data are needed when saving to ASCII format'.
- Number of Files:** A text field containing '10'. A callout points to it with the text 'Specify the number of files (1 to 65535)'.
- File Name Start Number:** A text field containing '0'. A callout points to it with the text 'When specifying the start number of the file name'.
- Header/Overwrite:** Checkboxes for 'Header (On Every File)' (checked) and 'Overwrite' (checked). A callout points to 'Overwrite' with the text 'Enable overwriting to the same file name'.
- Start saving measured data at the start:** An unchecked checkbox. A callout points to it with the text 'Enable the save operation using the settings'.
- Sound recording method:** A dropdown menu set to 'Manual'. A red circle highlights this dropdown with the callout 'Select the method of recording the voice memo'.
- Buttons:** 'Start', 'Stop', 'OK', and 'Cancel'. Callouts point to 'Start' ('Start the save operation when measurement is started'), 'Stop' ('Stop the save operation'), 'OK' ('Keep the settings without starting the save operation and close'), and 'Cancel' ('Cancel settings').
- Comment:** A text area for entering comments. A callout points to it with the text 'Enter comments for the header file' and 'When creating a header file for each data file'.

Page 4-34 “Note” under “• Starting the save operation using triggers” under “Trigger Control of Waveform Data Saving”

Note

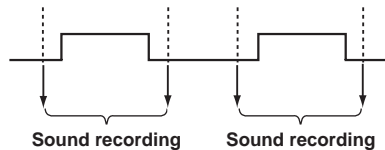
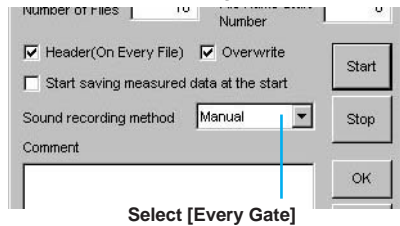
- On the WE7235, WE7245, WE7251, WE7271/WE7272, WE7273, WE7275, and WE7521 modules, the interval over which the trigger is detected is specified on the operation panel of the module. To discard trigger detection for a certain time after starting measurements, specify that interval using a “pretrigger.” To discard trigger detection for a certain time after the previous trigger, specify that interval using a “hold off.”

Page 4-35 Addition to “Trigger Control of Waveform Data Saving”

When using gate control, waveform data and voice data (voice memo) can be saved to a single file.

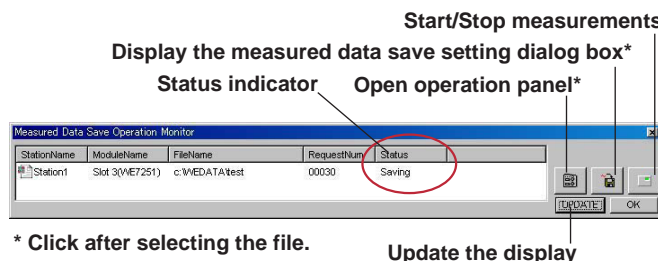
- **Saving voice memo on every gate (only during free run mode)**

Set [Sound recording method] to [Every gate].

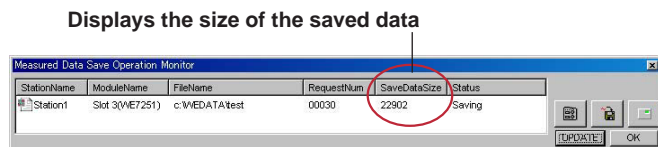


Page 4-37 “Monitoring the Save Operation of Measured Data

If the Measured Data Save Operation Monitor check box is selected in the View menu, a monitor window appears when the save operation of the measured data starts. You can confirm the save status of the measured data in this window. As shown in the following figure, the name of the measuring station saving the data, the slot No. and module name, the file name, the number of measurements, the save status of the measured data (Saving, Stopped, Waiting for trigger, and Waiting for time), and so on are displayed in the monitor window.



- When the [Clear the sampling interval limit (free run mode)] check box is selected in [Configuration Settings] > [General]



Page 4-38 “Limitations”

The following limitations exist in the assorted module binding function.

- Applicable modules: WE7081, WE7231 (Ver. 3.05 or later), WE7235, WE7241, WE7245, WE7251, WE7271/WE7272/WE7273, WE7275, and WE7521 (Ver. 3.03 or later) within the same measuring station.
- Only ten types from the above modules are selectable.
- The digitizer modules (WE7251/WE7271/WE7272/WE7273/WE7275), the strain module (WE7245), and the timing measurement module (WE7521) can increase the maximum record length by reducing the number of the measurement channels. However, this function cannot be used during assorted module binding. In addition, the function that enables you to specify a 1-kHz input filter on the WE7251 Digitizer Module cannot be used during assorted module binding.

Page 4-40 Addition to “Precautions to be taken during operation” under “Assorted Module Binding Function”

If the time base is set to Internal, displayed data from the WE7231 Fast Digital Thermometer Module or WE7521 Timing Measurement Module may be erroneous by up to 0.8 s/h along the time axis relative to the other bound modules. Please be aware of this when performing continuous measurement in Free Run mode.

Page 4-41 “Record length” under “Assorted Module Binding Function”

The selectable record length varies depending on the selectable sampling intervals of the target modules as following below. And even at the ranges shown below, it is only possible to set a record length such that data can be acquired at a measurement interval of 5 ms or more.
 WE7251: 100 to 100 k points, WE7245/WE7271/WE7272/WE7273/WE7521: 100 to 1 M points, WE7081/WE7275: 100 to 2 M points

Page 6-3 “Safety Standards” under “General Specifications”

Safety Standards

Complies with CSA C22.2 No.1010.1 and EN61010-1, conforms to JIS C1010-1

- Overvoltage Category CAT II^{*1}
- Measurement Category CAT II^{*2}
- Pollution Degree 1 and 2^{*3}

*1 Overvoltage Category define transient overvoltage levels, including impulse withstand voltage levels.

Overvoltage Category II: Applies to equipment supplied with electricity from fixed installations like a distribution board.

*2 Measurement Category describes a number which defines transient stresses from the circuit to which they are connected during measurement or test. It implies the regulation for impulse withstand voltage.

Measurement Category is applied to the measuring circuit.

Measurement Category II: For measurements performed on circuits directly connected to the low voltage installation.

NOTE: Examples are measurements on household appliances, portable tools and similar equipment.

*3 Pollution Degree: Applies to the degree of adhesion of solid, liquid, or gas which deteriorates withstand voltage or surface resistivity.

Pollution Degree 1: Applies to closed atmospheres (with no, or only dry, non-conductive pollution).

Pollution Degree 2: Applies to normal indoor atmospheres (with only dry, non-conductive pollution).

Page 6-5 “Number of Interface Ports”

WE7037: 1 port

WE7038: 2 ports

Page 6-5 “Safety Standards” under “General Specifications”

Safety Standards

Complies with CSA C22.2 No.1010.1 and EN61010-1, conforms to JIS C1010-1

- Overvoltage Category CAT II^{*1}
- Measurement Category CAT II^{*2}
- Pollution Degree 1 and 2^{*3}

*1 Overvoltage Category define transient overvoltage levels, including impulse withstand voltage levels.

Overvoltage Category II: Applies to equipment supplied with electricity from fixed installations like a distribution board.

*2 Measurement Category describes a number which defines transient stresses from the circuit to which they are connected during measurement or test. It implies the regulation for impulse withstand voltage.

Measurement Category is applied to the measuring circuit.

Measurement Category II: For measurements performed on circuits directly connected to the low voltage installation.

NOTE: Examples are measurements on household appliances, portable tools and similar equipment.

*3 Pollution Degree: Applies to the degree of adhesion of solid, liquid, or gas which deteriorates withstand voltage or surface resistivity.

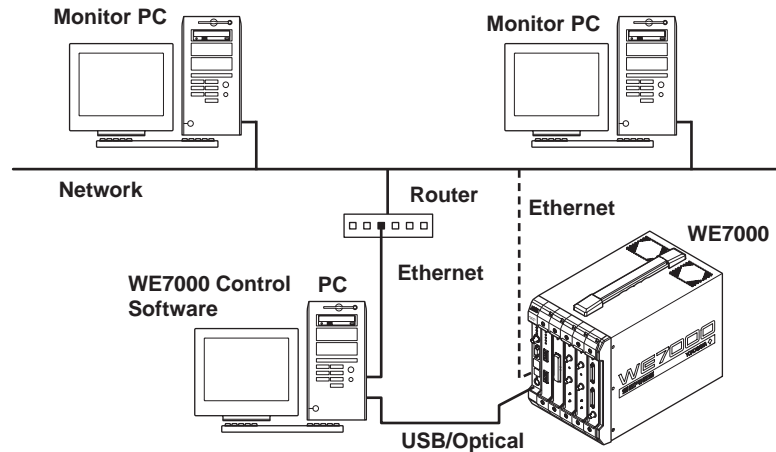
Pollution Degree 1: Applies to closed atmospheres (with no, or only dry, non-conductive pollution).

Pollution Degree 2: Applies to normal indoor atmospheres (with only dry, non-conductive pollution).

Appendix Displaying Waveforms Using the Web Monitor Function

The waveforms displayed on the WE7000 Control Software can be shown on a Web browser on a separate PC over the network (Web Monitor function).

System Configuration Example



OS

One of the following OSs is required on the PC running the WE7000 Control Software to use the Web Monitor function.

- Windows 2000
- Windows XP Professional

Recommended Browser

Internet Explorer

Enable Java according to the following procedure.

1. From the Tools menu on Internet Explorer, choose Internet Options.
2. Click the **Custom Level** button under the Security tab.
3. Enable Active scripting under Scripting.

Preparations before Web Monitoring

To show the waveforms displayed on the WE7000 Control Software on the Web Monitor, the following software programs must be installed in the PC running the WE7000 Control Software. Be sure to install Internet Information Services (IIS) first.

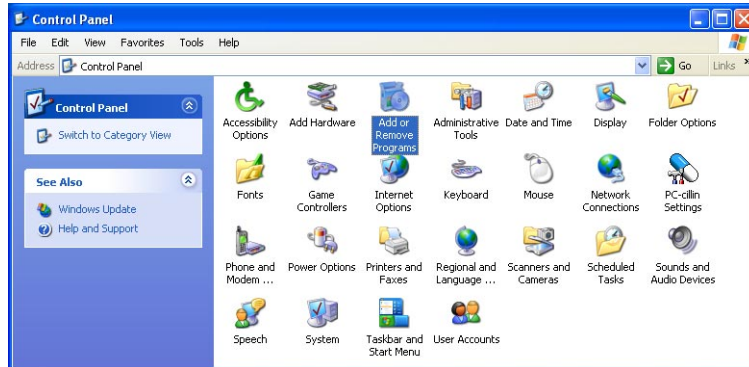
Internet Information Services(IIS)
WEWebMonitor

Note

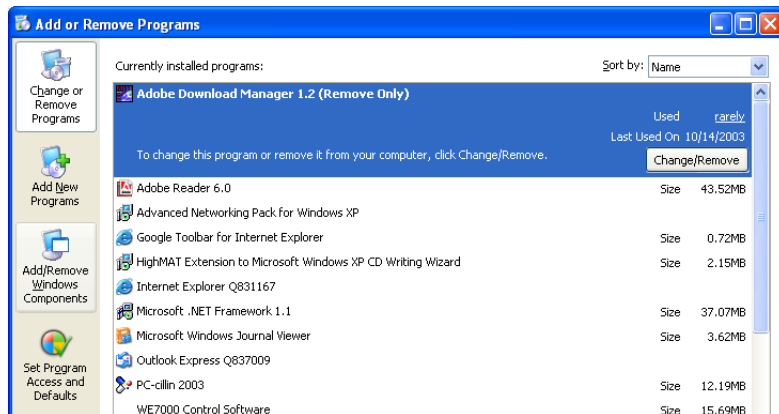
Before installing the software programs above, check that the OS that you are using is up-to-date. If it is not, update the OS by installing the Windows update programs provided by Microsoft.

Installing Internet Information Services (IIS)

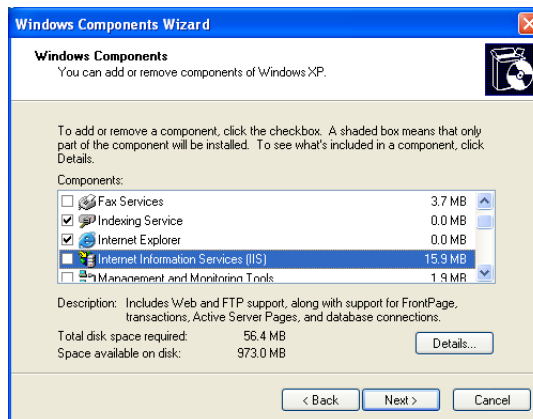
1. Open the Windows Control Panel.



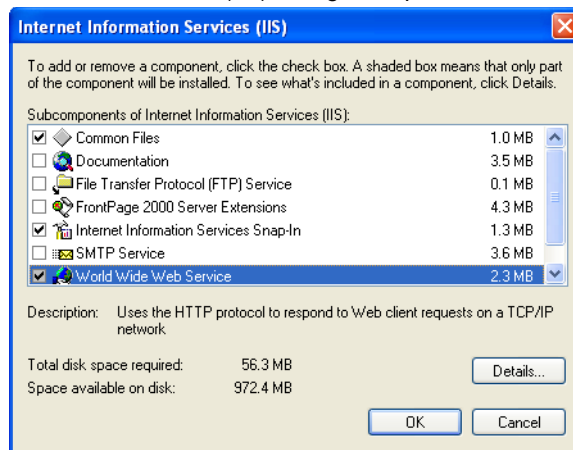
2. Double-click **Add or Remove Programs** to open the Add or Remove Programs dialog box.



3. Click **Add/Remove Windows Components** in the left frame of the dialog box. Windows Component Wizard starts.



4. Select **Internet Information Service (IIS)** and click **Details**. The Internet Information Service (IIS) dialog box opens.

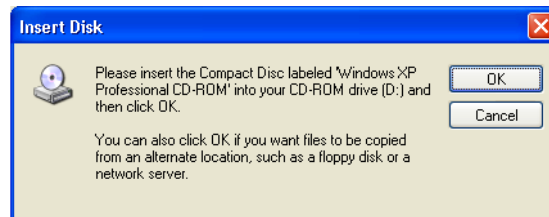


5. Select the check boxes for the following three components, and click **OK**.

- World Wide Web Service
- Internet Information Services Snap-In
- Common Files

When you select the World Wide Web Service check box, the check boxes for the other two components are also automatically selected.

6. Check that the Internet Information Services (IIS) check box is selected in the Windows Component Wizard, and click **Next**. The following dialog box opens.



7. Click **OK**. The installation starts.
8. When the installation is finished, the following dialog box opens. Click **Finish** to close the installation window.



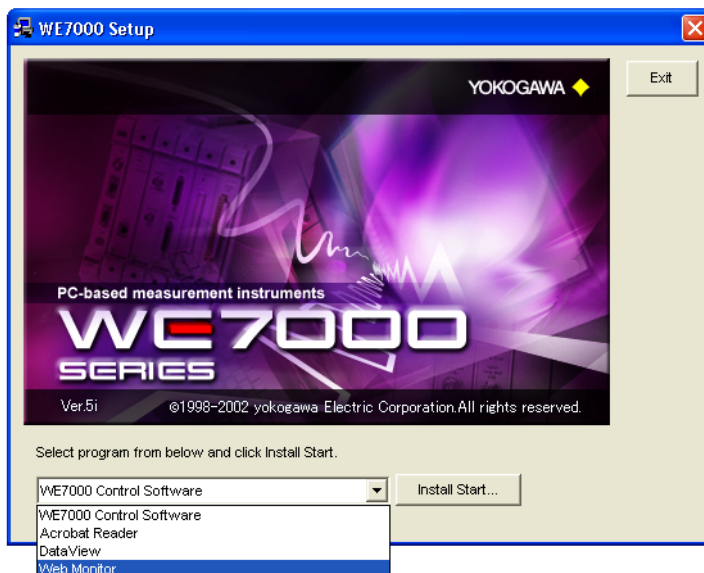
This completes the installation of Internet Information Services (IIS).

Installing the Web Monitor

Install the Web Monitor to the PC running the Control Software. The Web Monitor is provided on the WE7000 Control Software Setup Disk CD-ROM.

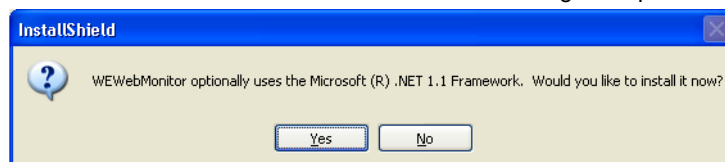
1. Turn ON the power to your PC.
Log on to Windows as an administrator.
2. Insert the WE7000 Control Software Setup Disk into the CD-ROM drive. The startup menu opens automatically. Select **Web Monitor** from the list box in the startup menu, and click **Install Start**.

However, if the auto run feature of the CD-ROM is disabled, start setup.exe at the root directory of the CD-ROM using My Computer or Explorer.



The installation starts.

The Microsoft .NET 1.1 Framework installation dialog box opens.

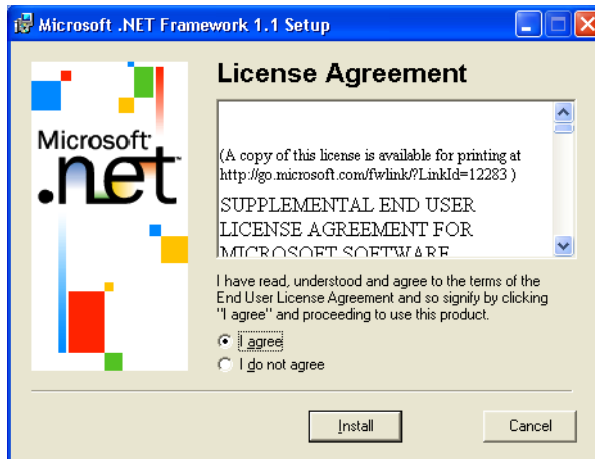


If the PC that you are using already has Microsoft .NET 1.1 Framework installed, the WEWebMonitor Installation Wizard window of step 5 opens. Proceed to step 6.

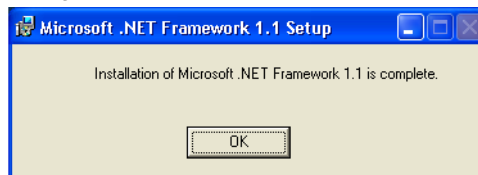
Note

If the PC does not have Internet Information Services (IIS) installed, a confirmation message appears. If this message appears, abort the installation, and reinstall the program according to the procedures given on page App-16.

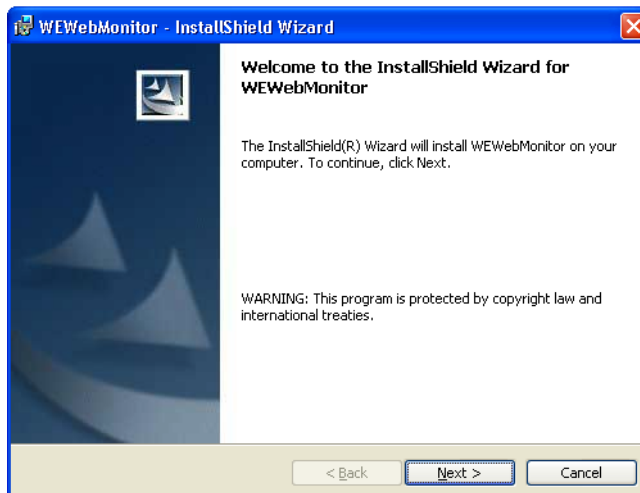
3. If Microsoft .NET 1.1 Framework is not installed, click **Yes**. The License Agreement is shown.



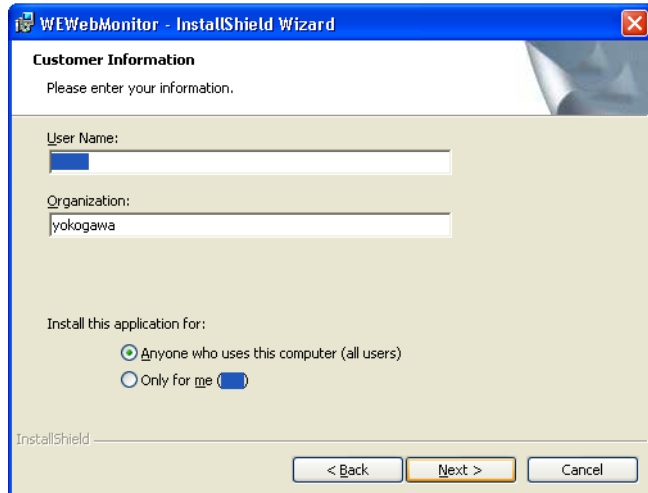
4. If you agree, select **I agree** and click **Install**. The installation of Microsoft .NET 1.1 Framework starts.
If you do not agree, select **I do not agree** and click **Cancel**. The installation will be cancelled.
5. When the installation of Microsoft .NET 1.1 Framework is finished, the following dialog box opens.



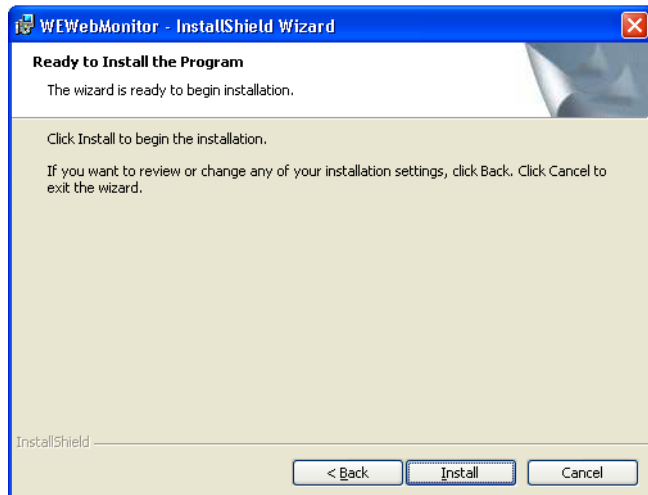
Click **OK**. The WEWebMonitor InstallShield Wizard window opens.



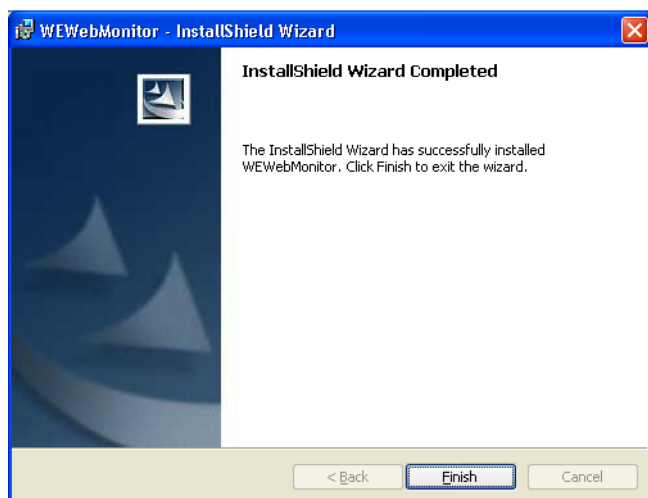
- Click **Next**. The Customer Information dialog box opens.



- Enter your information.
- Select whether to enable the Web Monitor for all users that log on to the PC or only for the user currently logged on, and click **Next**. The following dialog box opens.



- To install the program, click **Install**. The installation starts. To not install the program, click **Cancel**. The installation will be cancelled.
- When the installation is finished, the following dialog box opens. Click **Finish** to close the installation window.

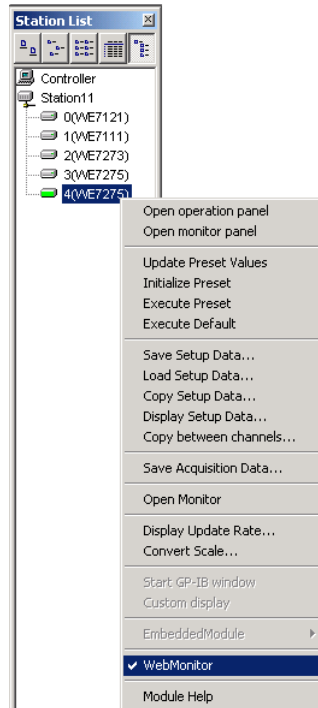


This completes the installation of the Web Monitor.

Displaying Waveforms on the Web Monitor

WE7000 Control Software

1. Start the WE7000 Control Software.
2. Select the module whose waveform is to be shown on the Web Monitor from the station list window, and right-click.



3. Check that the Web Monitor check box is selected. If it is not, click **Web Monitor** to select it.

Displaying Waveforms on the Web Monitor

1. Start the Web browser.
2. Enter "http://computer name/WEWebMonitor/WebMonitor.htm" in the Address box. The computer name is the name of the computer running the WE7000 Control Software.

The waveform Monitor displayed on the WE7000 Control Software is shown.

Switch stations when multiple stations are being Web-monitored

Switch the monitored module when multiple modules are being Web-monitored

During assorted module binding

Bound Module:1

Stop display updating

Update the display repeatedly at a specified display update rate

Update the display arbitrarily

Display update rate

Status of the measured data save monitor

Waveform Monitor displayed on the WE7000 Control Software

If the Waveform Does Not Appear

If you install Internet Information Services (IIS) after installing WEWebMonitor, the Waveform Monitor will not be shown on the Web browser.

If this is the case, uninstall Microsoft .NET 1.1 Framework. Then, reinstall Internet Information Services (IIS) followed by WEWebMonitor.

To uninstall programs, use **Add/Remove Programs** in Windows Control Panel.